



DPS-5000e

PC Based Compact Pre-Pack Scale



Searching for a New Balance

Operator Display

Colourful 8.4" adjustable TFT touch screen display.



Hi-Res Printing

Front-loading 300dpi hi-res label printer with 80mm print width.

Optional Short Stand

Stainless steel short stand elevates scale for better comfort.

External Platform

Support external SX-C & S-WR platforms for high precision weighing.

More Features...

Remote diagnostics, email alert, printing graphics on label and receipt, and Help Mode for operators.



SX-C

Specifications

Capacity	Resolution	Max 15kg / 30lb	Max 30kg
Single Interval	1 / 3,000	e = 5g / 0.01lb	e = 10g
	1 / 6,000	—	e = 5g
	1 / 7,500	e = 2g	—
Capacity	Resolution	Max 6 / 15kg	Max 15 / 30kg
Multi Interval	1 / 3,000	e = 2 / 5g	e = 5 / 10g

Model	DPS-5000e	
Dimension	DPS-5000e 220 x 423 x 423	
W x D x H (mm)	Platform	SX-C (15 kg): 294 x 354 x 54
	ShortStand (Option)	S-WR (30 kg): 295 x 355 x 55
Operator Display	210 x 369 x 183	
Display Size	8.4" TFT SVGA with Touch Panel	
Display Size WxD (Pixels)	800 x 600	
Display Rotatable Degree	+ / - 30 degree left and right ; 90 degree up and down	
Types	Liner	Liner Less With Auto-Cutter
	Roll Diameter	Max 125mm
Label / Receipt	Roll Width	Max 80mm
	Print Width	Max 80mm
Printing Speed	Max 150mm / second*	Max 150mm / second*
	Print Resolution	300 dpi
Barcode Type	Interleaved 2 of 5, EAN-8, EAN-13, EAN-128, RSS, PDF417 (For Receipt Only), GS1, QR Code, Datamatrix	
Power Source	AC 100V / 220V	
Power Consumption	80W	
Operating Temperature	- 10°C to + 40°C	
Humidity	15% to 85% RH Non-Condensation	
Standard Interface	2 x RS232C, Ethernet 10 / 100 Base T, 4 x USB 2.0, SD Socket	
Net Weight	DPS-5000e	11.2 kg
	Platform	SX-C: 6.65 kg
	Short Stand (Option)	S-WR: 4.5 kg
Short Stand (Option)	3.4 kg	

Options	Wireless LAN IEEE 802.11 a / b / g / n / ac, InfoTag, e.Label with Hi-Touch, Base Station
Factory Option	Linerless Printer with Auto-Cutter

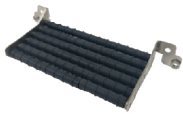
* To achieve maximum print speed, high sensitivity thermal paper is necessary.

Options

Internal Rewinder Kit - Accommodates batch printing by winding up dispensed labels into a neat roll.



Long Label Holder - Prevents long label from falling off when dispensed.



Connect seamlessly to electronic shelf labels for in-store pricing automation.

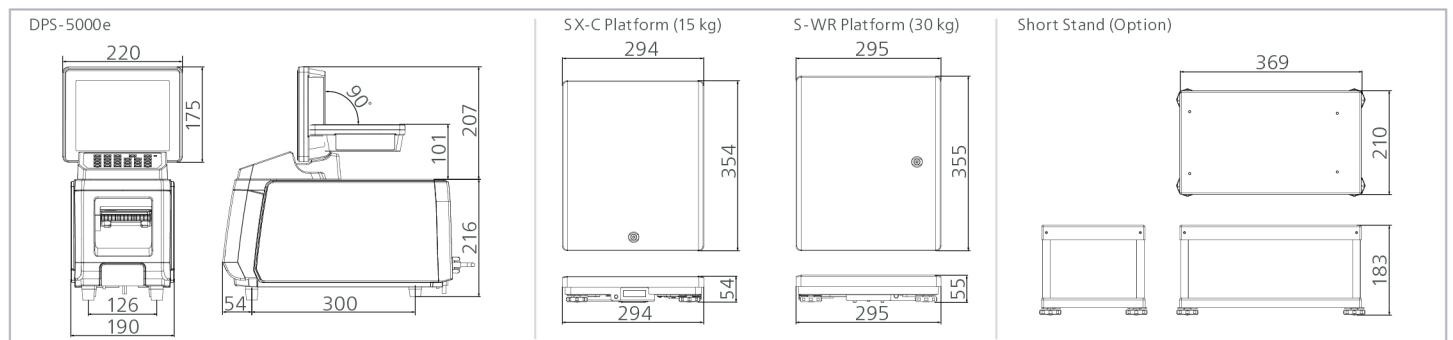
eLabel..

InfoTag..



Linerless Labeling reduces paper waste to bring operational sustainability.

External Dimensions (mm)



• Specifications are subject to change without prior notice
• Meet or exceed OIML Class III requirements

DIGI SINGAPORE Pte. Ltd.

4 Leng Kee Road #05-02/03/04/05/11/12
SIS Building SINGAPORE 159088
TEL : +65 6472 2996
SALES: +65 6378 5387
FAX : +65 6863 4614
URL : www.digisystem.com/sg/
E-MAIL : customer_support@sg.digi-group.com

TERAOKA SEIKO CO., LTD.

13-12 Kugahara 5-chome, Ohta-ku,
Tokyo 146-8580, JAPAN
TEL : +81-3-3752-2131
FAX : +81-3-3752-5562
URL : www.digisystem.com